

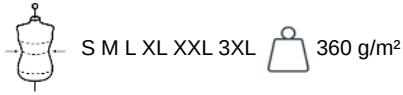
KARIBAN

K456

Men's full zip sweat jacket

- 3-yarn brushed fleece fabric with LSF treatment for an excellent print surface, hard-wearing and resistant in the wash.
- In keeping with the urban casual spirit of the LSF range.
- Softness and comfort guaranteed.

80% combed cotton/20% polyester. Low shrinkage brushed fleece. Silicone wash. Fitted style with ribbed side panels. Matching neck tape (except for White body where neck tape is Oxford Grey). Contrast striped ribbed inner collar (White for all colours, except for White body where stripes are Oxford Grey). 2 front pockets. Ribbed cuffs and hem. Zip fastening.

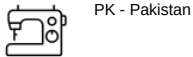


More information

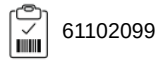
Logistic



Country of origin



Customs code



Also available in version



K457

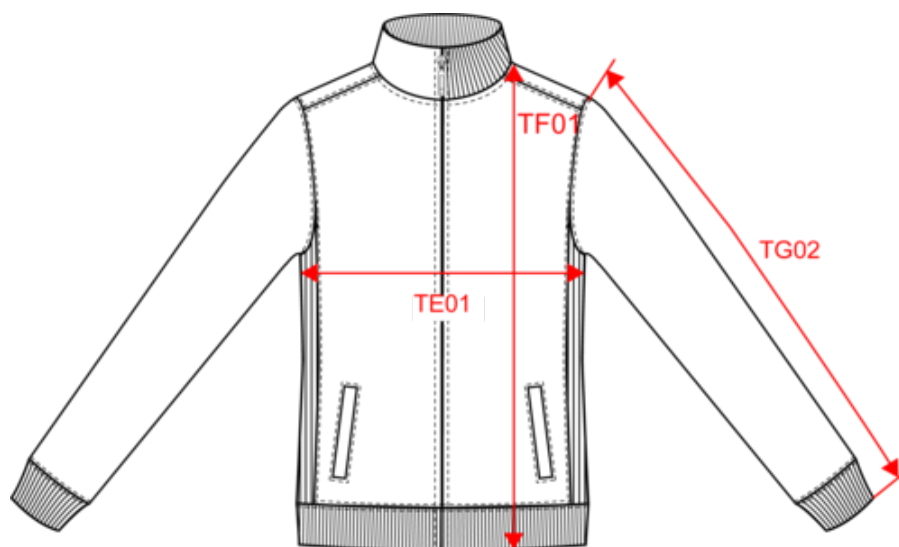


KARIBAN

K456

Men's full zip sweat jacket

Dimensions (cm)



Measurements in cm	S	M	L	XL	XXL	3XL
TF01 - Total height from HSP	69.50	71.50	73.50	75.50	77.50	79.50
TG02 - Long sleeve length	67.25	68.25	69.25	70.25	71.25	72.25

KARIBAN

K456

Men's full zip sweat jacket

Colours information



Black

RVB : 35,35,37
Pantone C : Black
Pantone TCX : 19-4004TCX



Navy

RVB : 41,46,56
Pantone C : 433C
Pantone TCX : 19-4012TCX



Oxford Grey

RVB :
Pantone C : Based on Cool gray 7C
Pantone TCX : Based on 16-3850TCX

Logistic



5



20

Sizes	Width (cm)	Height (cm)	Length (cm)	Net weight (kg)	Gross weight (kg)	Pieces/Box	Pieces/Bundle
S	40.00000	35.00000	60.00000	11.10000	12.50000	20	5
M	40.00000	35.00000	60.00000	12.30000	13.90000	20	5
L	40.00000	35.00000	60.00000	13.10000	14.80000	20	5
XL	40.00000	38.00000	60.00000	14.00000	15.50000	20	5
XXL	40.00000	38.00000	60.00000	15.00000	16.50000	20	5
3XL	40.00000	38.00000	60.00000	16.30000	17.80000	20	5