

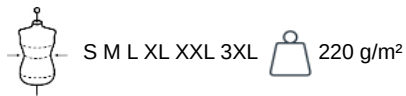
KARIBAN

K239

Men's short sleeve piqué polo shirt

- Chic, casual look.
- Ribbed neckline and cuffs.
- Made from piqué knit fabric.

95% cotton/5% elastane. Piqué knit. Ribbed collar with neck tape. Ribbed cuffs. Side vents. Twin needle finishing at the hem. 3-button placket.



More information

Logistic



5



25

Country of origin



BD - Bangladesh

Customs code



61051000



Also available in version



K240

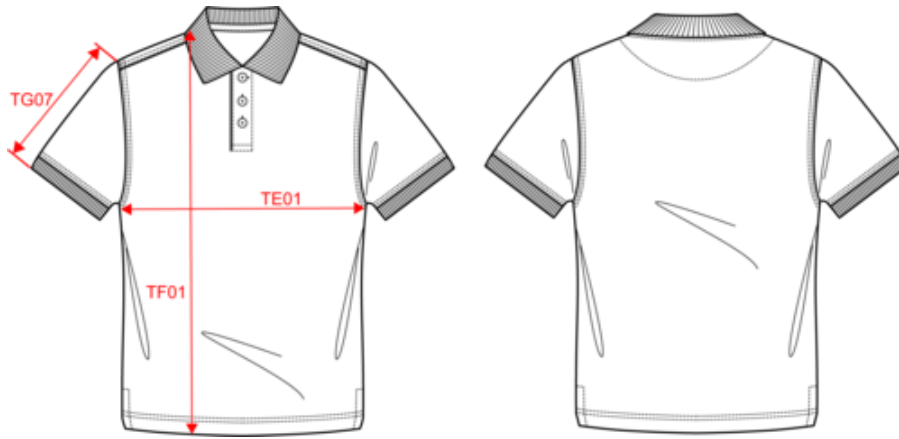


KARIBAN

K239

Men's short sleeve piqué polo shirt

Dimensions (cm)










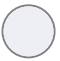
Measurements in cm	S	M	L	XL	XXL	3XL
TE01 - 1/2 chest width at 1.5cm below armhole	48.00	51.00	54.00	57.00	60.00	63.00
TF01 - Total height from HSP	70.00	72.00	74.00	76.00	78.00	80.00
TG07 - Short sleeve length	22.75	23.50	24.25	25.00	25.75	26.50

KARIBAN

K239

Men's short sleeve piqué polo shirt

Colours information

 Black RVB : 35,35,37 Pantone C : Black Pantone TCX : 19-4004TCX	 Dark Grey RVB : 63,60,60 Pantone C : 447C Pantone TCX : 19-0000TCX	 Deep Blue RVB : 65,72,95 Pantone C : 7545C Pantone TCX : 19-3926TCX	 Navy RVB : 41,46,56 Pantone C : 433C Pantone TCX : 19-4012TCX	 Red RVB : 195,32,54 Pantone C : 200C Pantone TCX : 19-1664TCX
 Sage RVB : 153,172,163 Pantone C : 5635C Pantone TCX : 16-5304TCX	 Snow Grey RVB : 170,174,175 Pantone C : 421C Pantone TCX : 15-4101TCX	 White RVB : 236,236,252 Pantone C : White Pantone TCX : 11-0601TCX		

Logistic



5



25

Sizes	Width (cm)	Height (cm)	Length (cm)	Net weight (kg)	Gross weight (kg)	Pieces/Box	Pieces/Bundle
S	40.00	16.00	60.00	0.00000	0.00000	25	0
M	40.00	16.00	60.00	0.00000	0.00000	25	0
L	40.00	16.00	60.00	0.00000	0.00000	25	0
XL	40.00	16.00	60.00	0.00000	0.00000	25	0
XXL	40.00	16.00	60.00	0.00000	0.00000	25	0
3XL	40.00	16.00	60.00	0.00000	0.00000	25	0